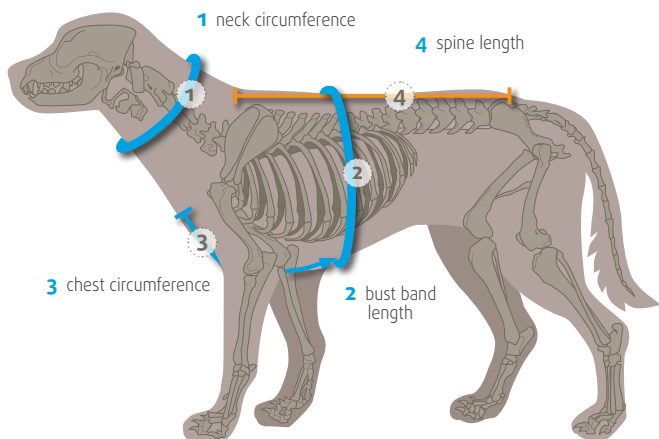




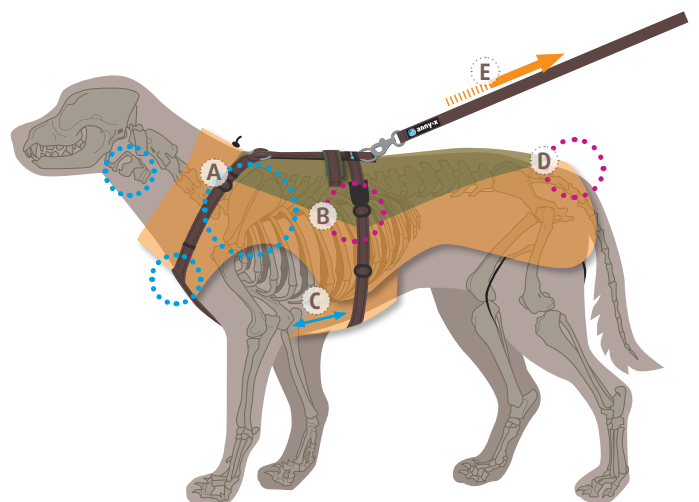
anny·x



FIND THE RIGHT SIZE!



THAT FITS!



HOW TO DETERMINE THE RIGHT SIZE!

COAT HARNESS FUN · PROTECT	XS	S	M	L	XL
1 neck circumference tight-fitting, in the middle of the neck	22 - 29 cm	26 - 33 cm	30 - 39 cm	38 - 48 cm	48 - 59 cm
2 chest circumferenc in the middle of the chest	43 - 52 cm	52 - 64 cm	62 - 74 cm	70 - 86 cm	78 - 96 cm
3 bust band length starting from the sternum, through the front legs, to the middle of the rib cage	19,5 cm	23 cm	30 cm	35 cm	38,5 cm
4 spine length Measure length of back from the last cervical vertebra to the base of the tail.	34 37 40 cm	43 47 51 cm	56 60 64 cm	68 72 76 cm	80 84 cm
weight	6 - 12 kg	9 - 19 kg	18 - 30 kg	26 - 38 kg	35 - 50 kg
breed examples	Dachshund Manchester Terrier Fox Terrier	Beagle Podenco Andaluz Cocker Spaniel	Border Collie Retriever English Setter	Weimaraner Great Munsterlander Collie, Doberman	Newfoundlander Kuvazs Great Dane

The measurements include a tolerance of +/- 1 cm.

THAT FITS! CHECK AFTERWARDS.

A The Y of the harness should sit on the sternum so that the shoulders and larynx are unimpeded.

B Two fingers should be able to fit between the chest strap and the dog's chest, so that it isn't too loose or too tight.

C The chest strap should fit with a large enough gap between the strap/band and the front legs to allow for unimpeded freedom of movement.

D The length of the back should be chosen according to the dog so that the tail has sufficient freedom of movement.

E Important: Make sure to also check each position when the harness is in use, so that the dog's movement is not restricted when the leash is pulled.